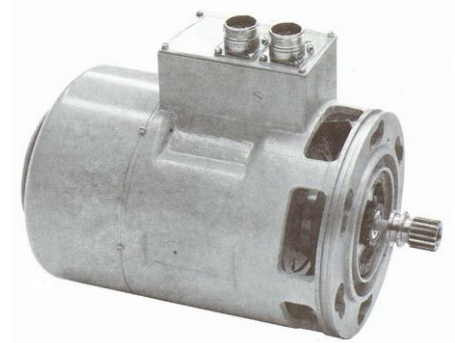


AC Generator Model 5071

Model 5071 electrical generation system consists of a generator, generator control unit (GCU) and current transformer assembly (CTA). This equipment has been developed for a close air support aircraft. The generator is pad-mounted on an auxiliary power unit.

The air-cooled generator is a brushless wound rotor, self-excited machine. An internal PMG supplies external contactor control and generator excitation. The generator drive shaft incorporates a shear section designed to shear at a torque of 500 lb-in, ± 10 percent.

The GCU regulates the output voltage of the generator and implements the listed protective functions. The CTA senses currents remotely to enable differential current protection.



Specifications

Voltage:

120/208 VAC

Speed Range:

10,800 to 13,200 RPM

Overspeed:

15,000 RPM

Efficiency:

85% at rated load

Rating:

10 KVA

Frequency:

400 HZ

Cooling:

Internal fan

Regulation

112 VDC to 118 VDC

Weight:

26.5 lbs

Ambient:

-54 C to 82 C

Altitude:

0 to 40,000 ft

Power factor:

.75 lag to .95 lead

Compliance:

MIL-STD-704A

MIL-STD-810B

MIL-STD-461A

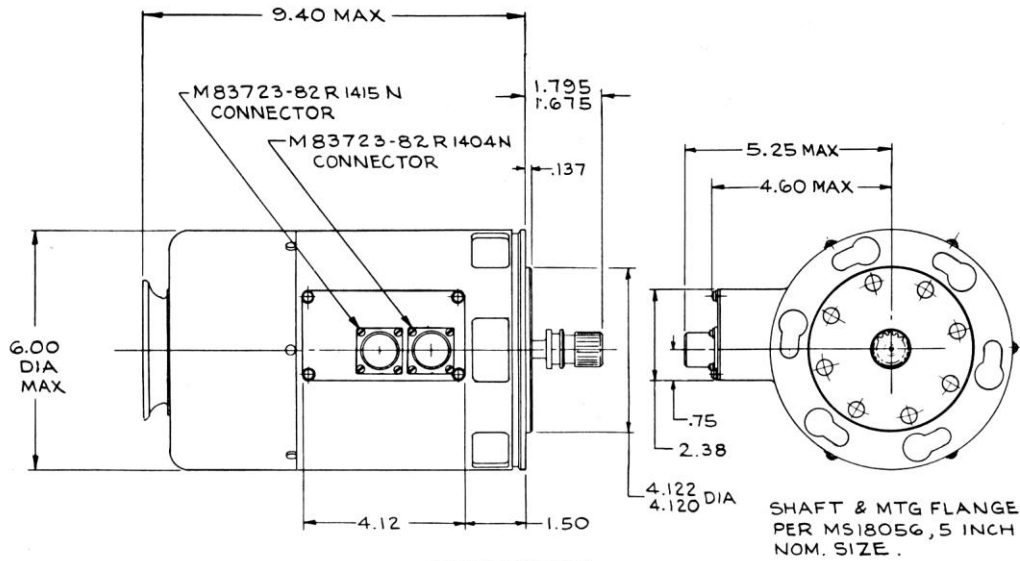
MIL-M-38510

MIL-G-6099

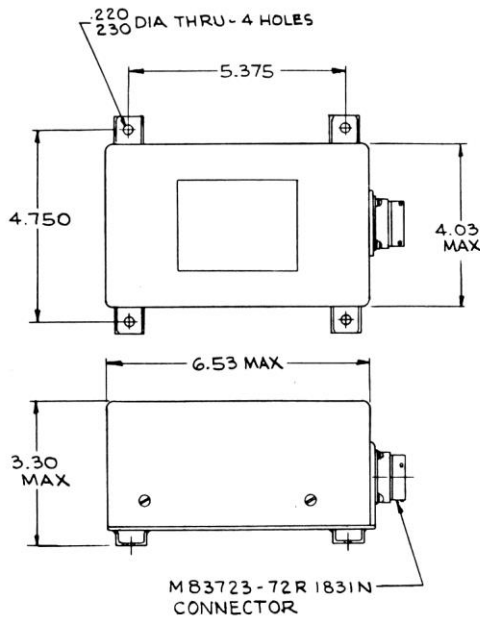
OEKO

Our product competencies and services:
Permanent magnet alternators | Permanent magnet generators | AC/DC brushless starter generators | Aircraft light dimmers
Power supplies | Magnetics | Sensors | Meters

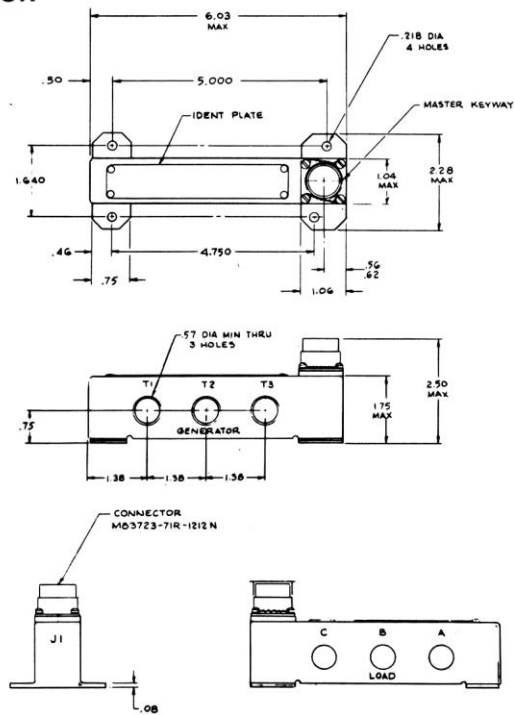
© OEKO | 2015



GENERATOR



GENERATOR CONTROL UNIT



CURRENT TRANSFORMER