

# AC Brushless Generator Model 5145

Model 5145 generator is a brushless wound rotor field, synchronous AC generator with its own permanent magnet section to provide self-excitation. It is coupled to a Ram Air Turbine (RAT), which is deployed into the air stream for emergency purposes.

The generator and accompanying Generator Control Unit (GCU) are complemented by a cockpit located Automatic Deployment Control. The ADC serves to provide system checkout as well as a means to deploy the RAT if a malfunction occurs.

The generator and GCU are supplied to Sundstrand Corporation while the ADC is supplied directly to Canadair, the manufacturer of the CL600/601 Challenger.



## Specifications

### Voltage:

120/208 VAC

### Speed Range:

11,400 to 12,600 RPM

### Overspeed:

15,000 RPM

### Efficiency:

87% @ rated load

### Rating:

10 KVA

### Cooling:

RAM air

### Ambient:

-40 C to 75 C

### Altitude:

0 to 40,000 ft

### Frequency:

400 HZ

### Weight:

27.5 lbs

### Regulation:

115 – 119 VAC

### Compliance:

MIL-STD-704A

MIL-STD-810C

MIL-STD-461A

AFSC DH1-4

### Life:

5000 hours

### Overload:

20 KVA for 5 seconds

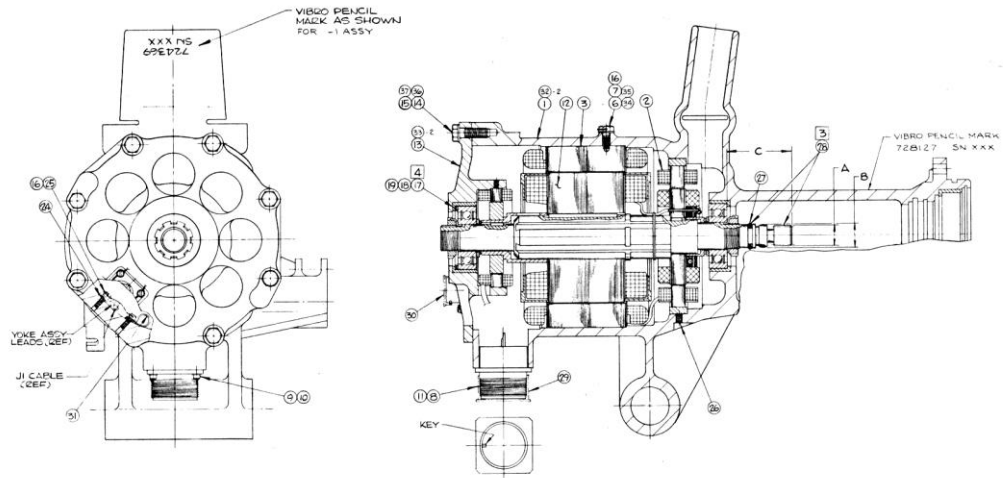
### Power factor:

.75 LAG to unity

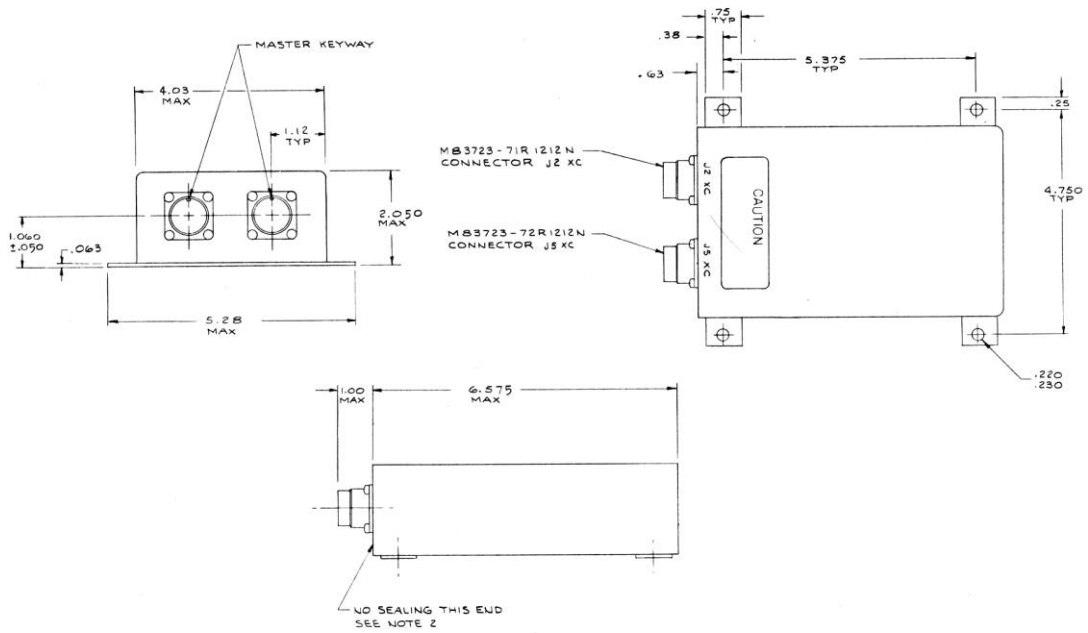
## OEKO

Our product competencies and services:  
Permanent magnet alternators | Permanent magnet generators | AC/DC brushless starter generators | Aircraft light dimmers  
Power supplies | Magnetics | Sensors | Meters

© OEKO | 2015



**GENERATOR**



**GENERATOR CONTROL UNIT**