

# AC Generator Model 5165

Model 5165 brushless generator system includes a salient pole machine with an internal permanent magnet section to provide self-excitation.

The generator drive shaft incorporates a shear section designed to shear at a torque of 500 lb.-in. maximum.

This particular 10 KVA system provides the main AC power for the HH 65A, U.S. Coast Guard SRR Helicopter. This helicopter is a derivative of the SA 266G-Dauphin 2.



## Specifications

### Voltage:

120/208 VAC

### Speed Range:

11,550 to 12,300 RPM

### Overspeed:

15,000 RPM

### Efficiency:

85% @ rated load

### Rating:

10 KVA

### Cooling:

Integral fan

### Ambient:

-34 C to 82 C

### Altitude:

0 to 20,000 ft

### Frequency:

400 HZ

### Weight:

23.15 lbs

### Regulation:

112 – 118 VAC from 385 to 410 HZ

### Compliance:

MIL-G-21480A

MIL-STD-810B

MIL-STD-461

### Life:

2000 hours

### Overload:

150% for 5 minutes

200% for 5 seconds

### Power factor:

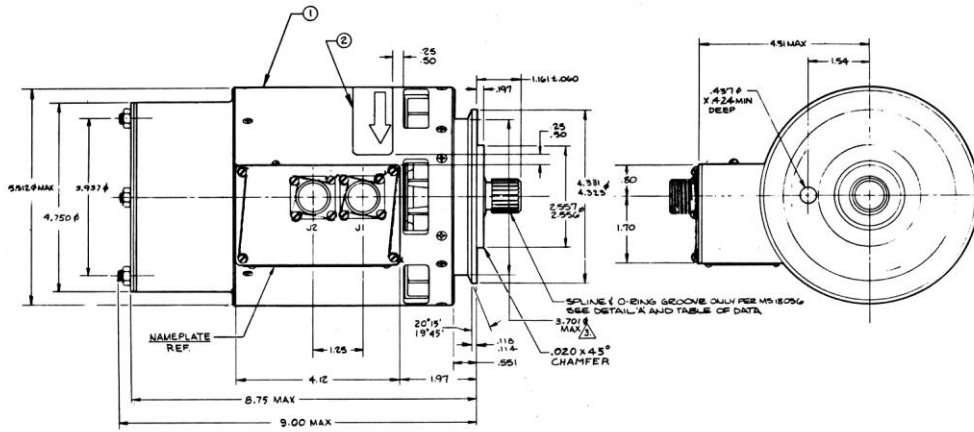
.75 LAG to unity

## OEEO

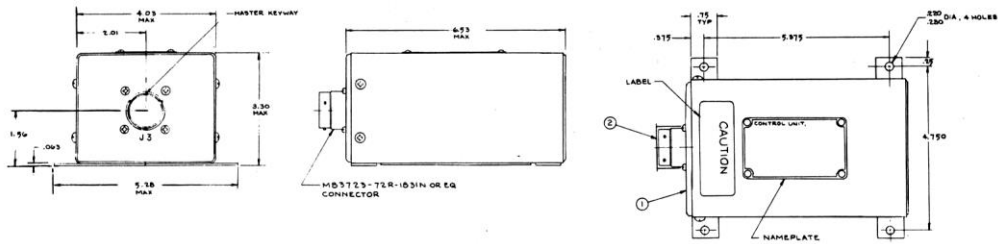
Our product competencies and services:  
Permanent magnet alternators | Permanent magnet generators | [AC/DC brushless starter generators](#) | Aircraft light dimmers  
Power supplies | Magnetics | Sensors | Meters

© OEEO | 2015

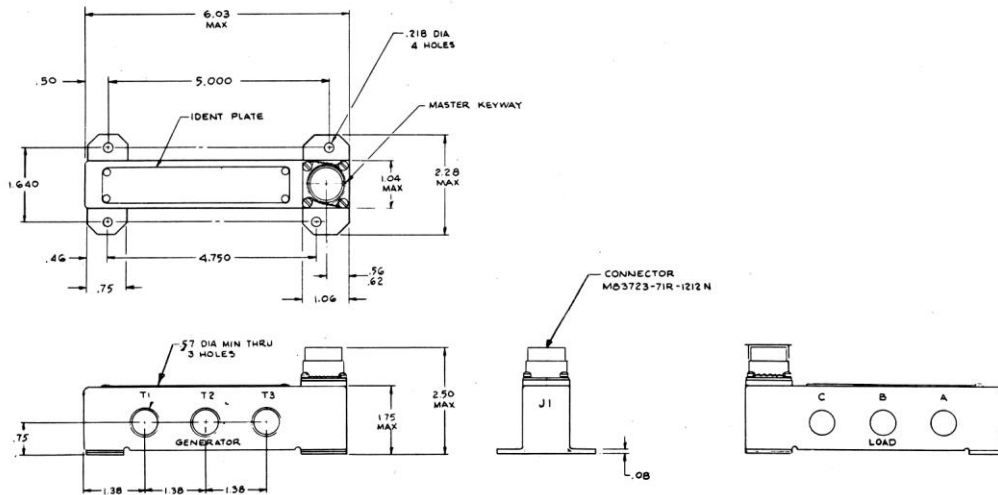
**MEGGITT**  
smart engineering for  
extreme environments



GENERATOR



GENERATOR CONTROL UNIT



CURRENT TRANSFORMER