



AC Generator Model 5318

Model 5318 provides electrical power for a FADEC system used on several GEAE commercial aircraft engines.

The rotor is a sleeved, segmented unit employing high energy product magnets. The stator comprises epoxy bonded laminations and dual three phase windings. An aluminum housing locates the stator and interfaces with the mounting pad. The alternator is gear driven from an engine accessory gear box.



Specifications

Overspeed:

24,272 RPM for 1 minute

Weight:

7.5 lbs

Temperature:

-54 C to 182 C

Altitude:

0 to 50,000 ft

Cooling:

Convection

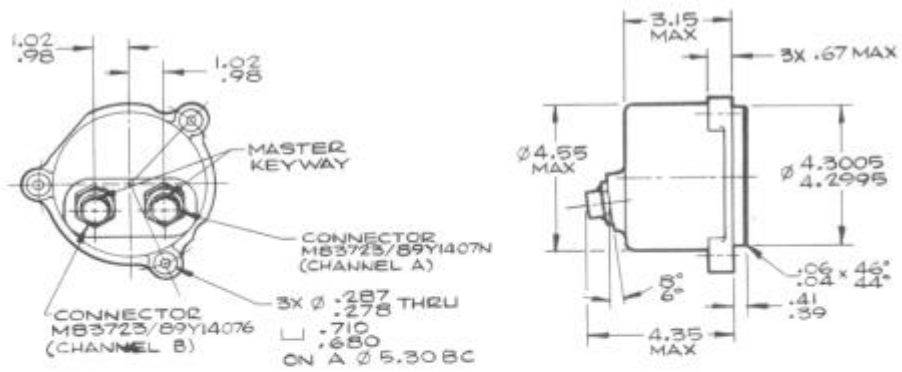
Compliance:

MIL-STD-461B
MIL-STD-462
MIL-STD-810D
MIL-STD-204D

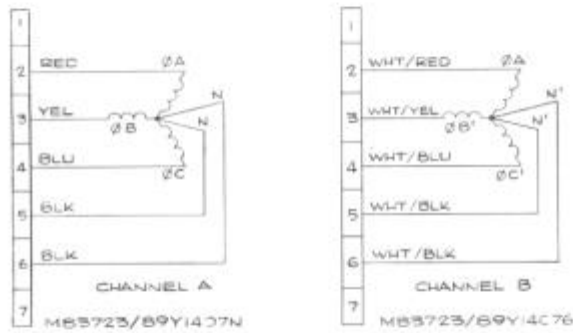
OEKO

Our product competencies and services:
Permanent magnet alternators | [Permanent magnet generators](#) | AC/DC brushless starter generators | Aircraft light dimmers
Power supplies | Magnetics | Sensors | Meters

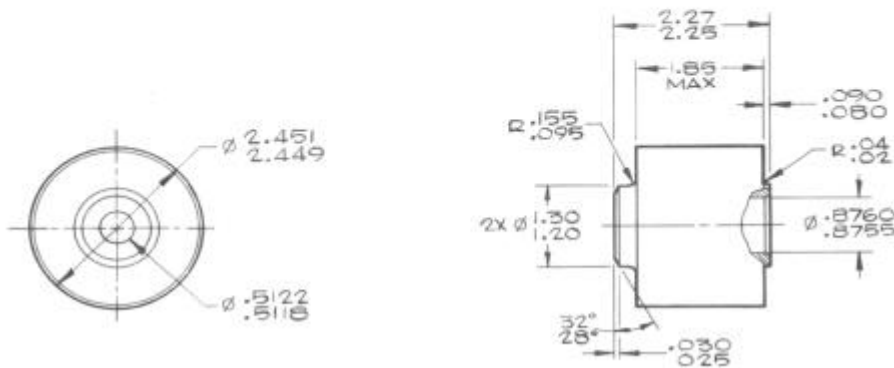
© OEKO | 2015



STATOR ASSEMBLY



ELECTRICAL DIAGRAM



ROTOR ASSEMBLY