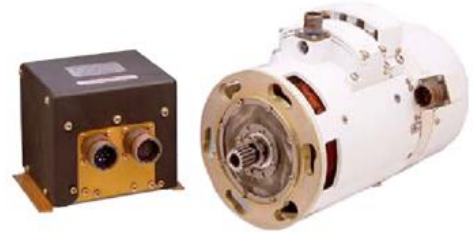


# AC Generator Model 5571

Model 5571 electrical power generation system consists of an AC generator, a generator control unit (GCU) and a remote current transformer assembly (CTA). This wide speed range, variable frequency system is used on the BA609 tilt rotor aircraft primarily as a power source for the rotor and nacelle de-icers.

The generator is configured as a three-phase, four-wire AC machine with an exciter and integral PMG to achieve brushless operation, self-excitation and precise voltage control. The PMG is oversized, featuring two, thermally isolated 3-phase windings, one used for generator excitation and the other as an independent source for the flight control computer. The GCU regulates the voltage for the generator, monitors system health and performance, controls the system power contactors and provides protective functions, as listed. The current transformer assembly (CTA) is used by the system to protect against feeder faults and differential currents.



## Specifications

### Voltage:

115/200 VAC

### Frequency:

400 HZ

### Speed Range:

9420 to 12,400 RPM

### Weight:

37.4 lbs

### Overspeed:

14,132 RPM

### Ambient:

-55 C to 71 C

### Efficiency:

85% at rated load

### Compliance:

MIL-G-21480

MIL-E-5400

MIL-STD-454

DO-160C

### Rating:

25 KVA continuous

### Power factor:

.85 LAG to unity

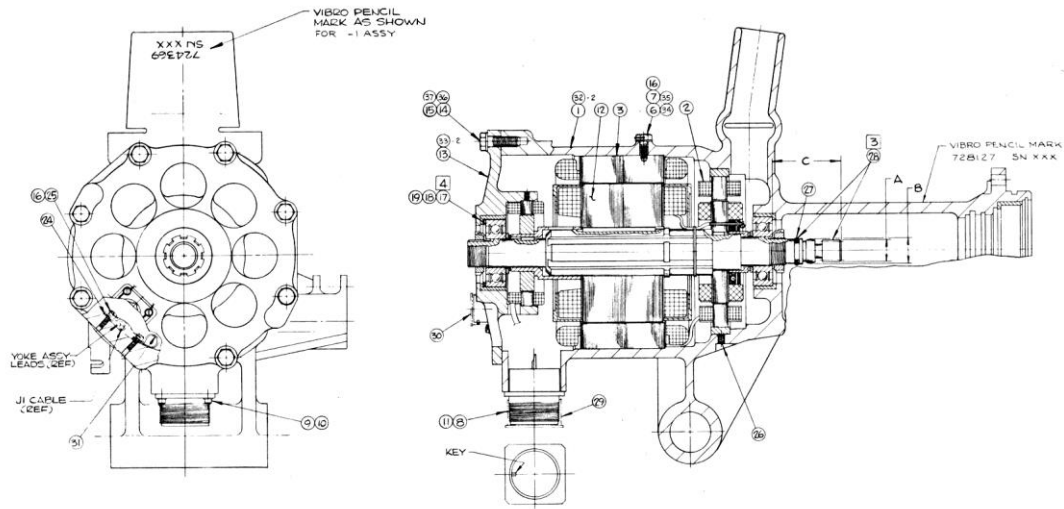
### Cooling:

Internal fan

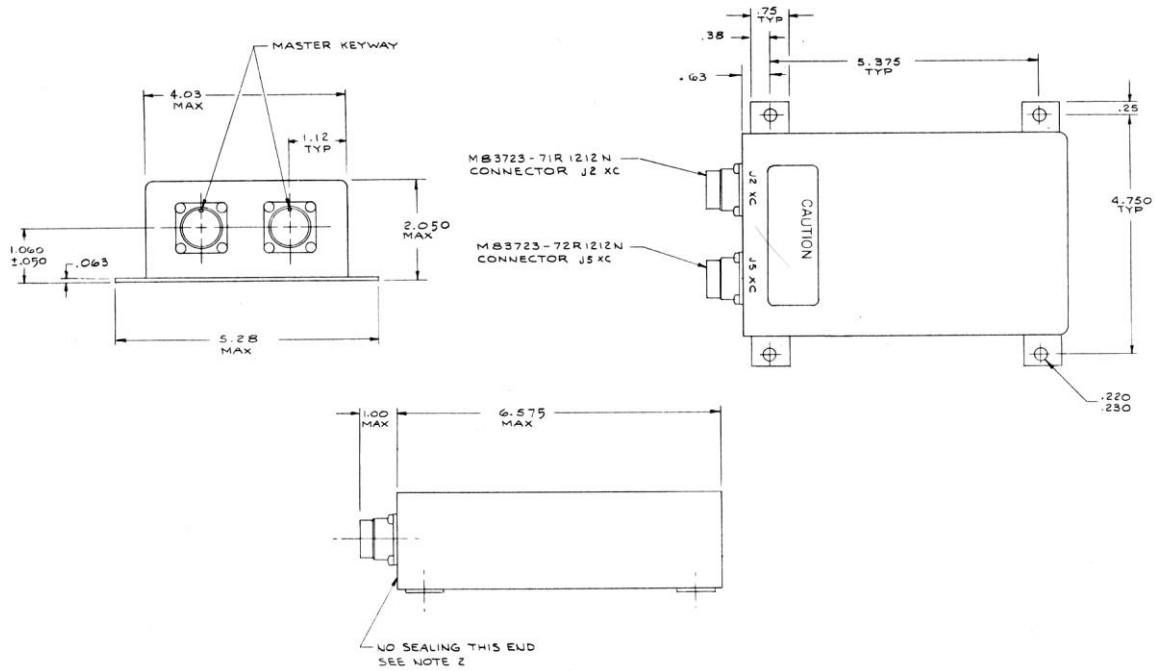
## OEKO

Our product competencies and services:  
Permanent magnet alternators | [Permanent magnet generators](#) | AC/DC brushless starter generators | Aircraft light dimmers  
Power supplies | Magnetics | Sensors | Meters

© OEKO | 2015



**GENERATOR**



**GENERATOR CONTROL UNIT**

OECO

4607 SE International Way  
 Milwaukie OR 97222  
 USA

Tel: +1 (503) 659 5999

www.oeco.com  
 www.meggitt.com