



DC Generator Model 5608

Model 5608 is a self-contained permanent magnet generator. It provides highly reliable DC power to the flight control electronics of the Bell 609 tilt rotor aircraft.

The unit comprises a rotor, a stator, and an output rectifier stage. The rotor is a segmented, sleeved unit, and is supported within the stator by two, highly precise bearings.

The stator comprises epoxy-bonded laminations with a single, three-phase, wye-connected winding. The stator output is connected to the integrated diodes for rectification.

Specifications

Overspeed:

14,400 RPM for 5 minutes

Weight: 4 lbs

Ambient:

-54 C to 85 C

Altitude:

0 to 50,000 ft

Cooling:

Convection

Compliance:

MIL-STD-461B

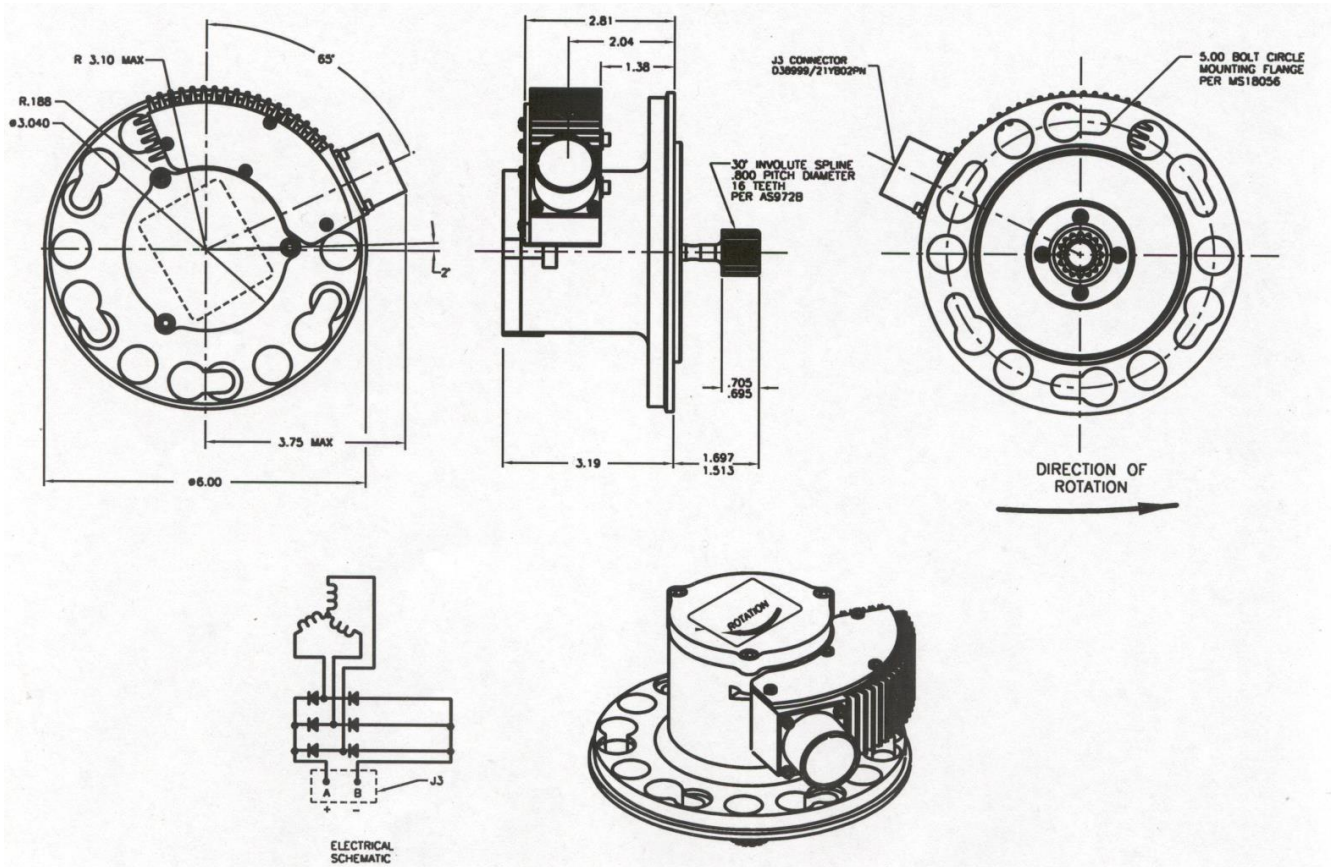
MIL-STD-462

MIL-STD-810D

MIL-STD-704D

OEKO

Our product competencies and services:
Permanent magnet alternators | [Permanent magnet generators](#) | AC/DC brushless starter generators | Aircraft light dimmers
Power supplies | Magnetics | Sensors | Meters



OECO

4607 SE International Way
Milwaukie OR 97222
USA

Tel: +1 (503) 659 5999

www.oeco.com
www.meggitt.com