



DC Generator Model 5610

Model 5610 includes a 12 KW generator and complementary generator control unit (GCU).

The generator is a brushless, self-exciting, three-in-one unit that provides main DC power to the Bell 609 Tilt Rotor Aircraft over a speed range of 5,500-9,400 RPM. This is a commercial grade unit which features long life, auxiliary bearings, reverse air flow, and excess flow capacity to aerate the mid-wing compartment

The GCU regulates the voltage of the generator. Regulation is accomplished by pulse width modulating the control field. The GCU also implements the protective and supervisory functions as listed in the specification table. The GCU also features end-to-end self-test (BIT) and full lightning and HIRF protection per the latest DO-160 levels.

Specifications

Voltage:

30 VDC

Altitude:

0 to 25,000 ft

Speed Range:

5500 to 9000 RPM

Weight:

31.7 lbs

Overspeed:

10,000 RPM

Rating:

400 A

Efficiency:

70% @ minimum rated load

Ambient:

-54 C to 71 C

Compliance:

DO-160D
MIL-G-6162
MIL-STD-454
MIL-STD-704
MIL-STD-5400
MIL-STD-461

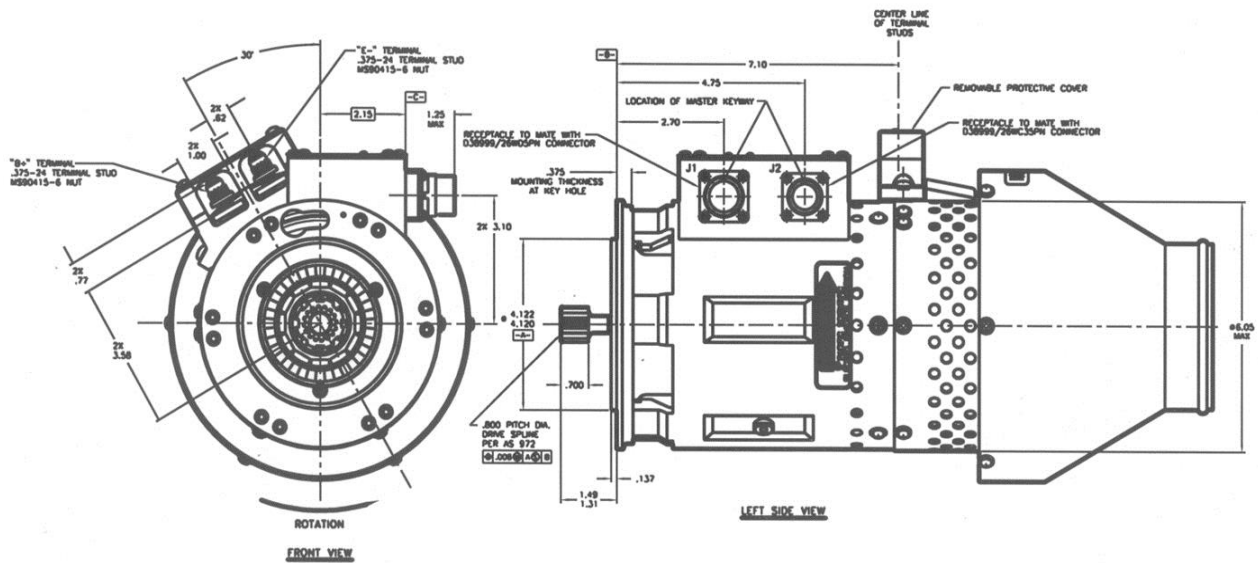
Cooling:

Self-cooled, Internal fan

OEKO

Our product competencies and services:
Permanent magnet alternators | Permanent magnet generators | AC/DC brushless starter generators | Aircraft light dimmers
Power supplies | Magnetics | Sensors | Meters

© OEKO | 2015



OEEO

4607 SE International Way
Milwaukie OR 97222
USA

Tel: +1 (503) 659 5999

www.oeco.com
www.meggitt.com