



Permanent magnet alternator

Model 5635

Model 5635 provides electrical power for a FADEC system used on a Pratt & Whitney Canada commercial aircraft engine.

The rotor is a sleeved unit employing high energy magnets. The stator comprises epoxy bonded laminations and a continuous three phase winding. A cast titanium housing locates the stator and interfaces with the mounting pad. The alternator is gear driven from an engine accessory gear box. This model features a European standard (EN295) connector style.



Specifications

Overspeed:

29,580 RPM

Weight:

1.0 lbs

Ambient:

-54 C to 177 C

Altitude:

0 to 50,000 ft

Cooling:

Convection / conduction

Compliance:

MIL-STD-461B

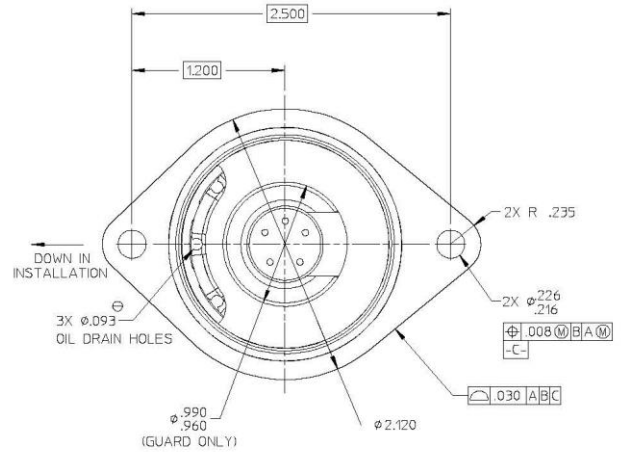
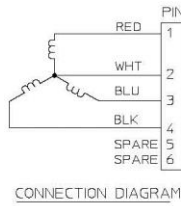
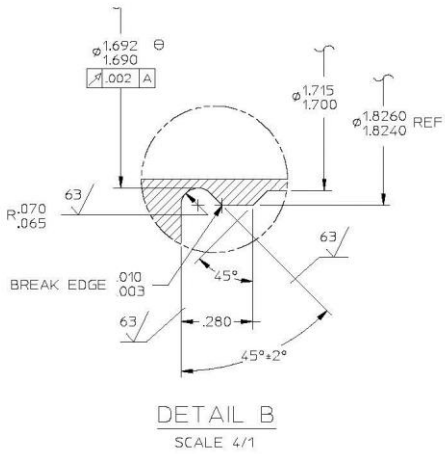
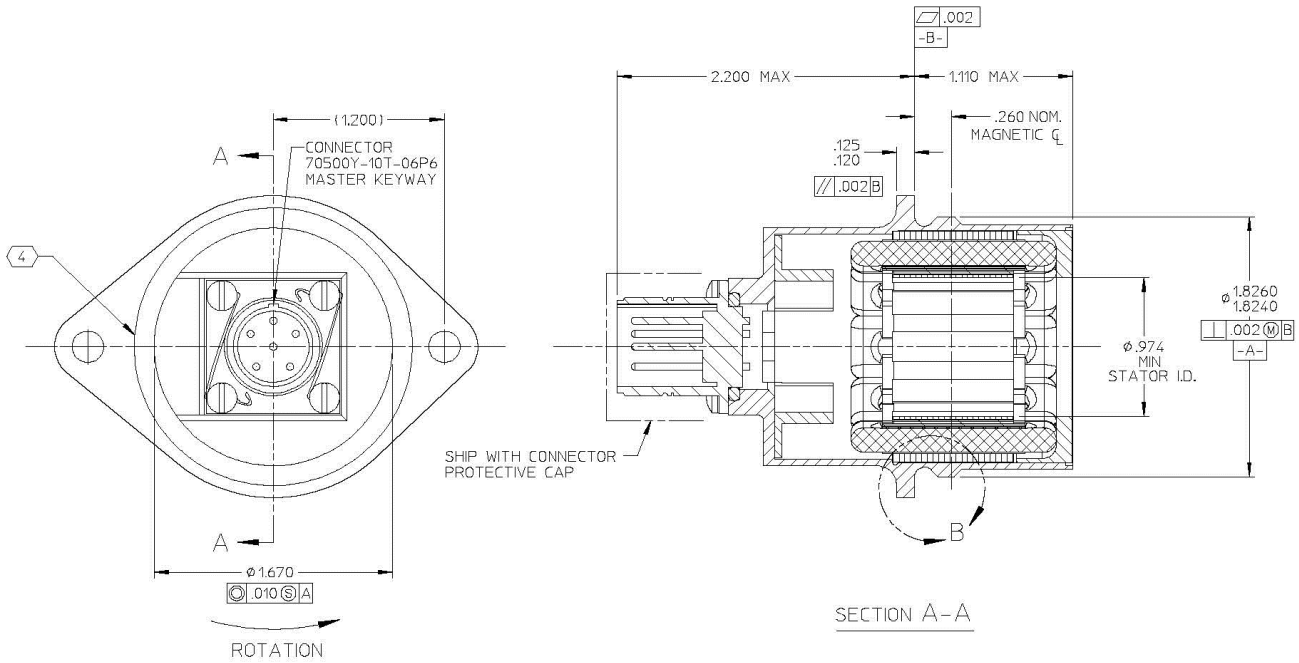
Electrical:

3 phase WYE connected

OEKO

Our product competencies and services:
Permanent magnet alternators | Permanent magnet generators | AC/DC brushless starter generators | Aircraft light dimmers
Power supplies | Magnetics | Sensors | Meters

© OEKO | 2015



OECO

4607 SE International Way
 Milwaukie OR 97222
 USA

Tel: +1 (503) 659 5999

www.oeco.com
 www.meggitt.com